

**SOCIAL
INNOVATION
COMMUNITY**

YEARBOOK



This project has received funding from the European Union's Horizon 2020 research and innovation programme under grant agreement No 693885.

CONTENTS

02

Foreword

03

Why Europe needs a Social Innovation Community

04-07

A decade of building social innovation communities in Europe

08-09

A network of networks

10

Four activities - Networks in practice

11

SIC key components and outputs - Research in action

12-13

SIC key components and outputs - Participatory learning

14-15

SIC key components and outputs - Experimentation

16-17

SIC key components and outputs - Policy influencing

18-19

What the partners think of SIC

20-21

What's next?

ACKNOWLEDGEMENTS

The Social Innovation Community (SIC) project would not have been successful without the dedicated commitment and support from all the consortium partners across Europe. They are TU Dortmund University (TUDO), University of Bologna (UNIBO), Politecnico di Milano (POLIMI), The Young Foundation (YF), Nesta, Social Innovation Lab (SIL), The Dutch Research Institute for Transitions (DRIFT), Sinergiak UPV/EHU, The Centre for Social Innovation (ZSI), The Danish Technological Institute (DTI), European Network of Cities and Regions for the Social Economy (REVES) and Social Innovation Exchange (SIX). Special thanks to the project coordinator Association Européenne pour l'Information sur le Développement Local (AEIDL) for their effort.

SIC would like to thank the Research Executive Agency Project Officer Hinano Spreafico, and the project's strong supporters from the Directorate-General for Research and Innovation, Philippe Martin and Samira Benyahia.

Finally, thanks Marco Shek and Sophie Monaghan-Coombs at SIX for putting together this Yearbook. This Yearbook is funded under the EC H2020 project SIC, Grant Agreement 693883.

DISCLAIMER

The information, documentation and figures in this Yearbook are written by the SIC project consortium under EC grant agreement 693883 and do not necessarily reflect the views of the European Commission. The European Commission is not liable for any use that may be made of the information contained herein.

FOREWORD

When it all started three years ago, I was far from imagining I was embarking on such a journey. The SIC project I was going to coordinate looked exciting, while complex, on paper; it happened to be fascinating, while still complex, and went far beyond all expectations. It turned out to be a true collective adventure.

A lot has been said and written in books, reviews and conferences in Europe and internationally about social innovation over the last decade. What strikes me most about our SIC project is its comprehensive operational dimension, linking theory to practice in so many different and creative ways. Today's world is often defined as a "knowledge society", and that clearly characterises our project. SIC does not only create and disseminate knowledge and values about social innovation, but makes them available to be used to improve the living conditions of European citizens, and to address the most pressing societal challenges we face.

How did SIC approach this? By gathering and transforming information and knowledge into resources that citizens, communities, organisations and public authorities can turn into effective actions. All our engagement, experimentation, learning and policy activities gave birth to actions and real commitment. Summer Schools, local experimentations, hot topic workshops, Learning Relays and policy masterclasses all serve to translate knowledge into practical tools. These are widely available and open for all - even those who do not suspect that they are (or could be) social innovators.

The heart of SIC, our eleven networks – a network of networks – were very active in building this community, channelling new ideas, actors and challenges, and ensuring SIC is about mutual learning and anchored in reality.

Creating a social innovation community is our aim. In order to reach it, nothing is more powerful than sharing values and knowledge openly, allowing everyone to become a social innovation actor by increasing the skills and capabilities they need for the future. All SIC resources belong to you!

I invite you to write the next pages of this amazing adventure with us; to join the wide community who co-produced the #SIDeclaration, the first European cross-sector, citizen-led Declaration for Social Innovation supported by our EU RTD Commissioner Carlos Moedas. The SIC project is over, but the social innovation journey is not. Action is needed.

Last but not least... nothing would have ever happened without the incredible SIC team, a community of fabulous, smart, fun and generous people I wish to work with again very soon. A very special thanks to a key person, my co-coordinator Patricia, who is fantastically supportive and creative.

I wish you all "bon voyage" in social innovation land through this Yearbook. We are waiting for you to join us.

ARMELLE LEDAN
SIC PROJECT COORDINATOR, AEIDL



“
...NOTHING IS MORE
POWERFUL THAN
SHARING VALUES AND
KNOWLEDGE OPENLY...”

WHY EUROPE NEEDS A SOCIAL INNOVATION COMMUNITY

THE BACKGROUND

The Social Innovation Community (SIC) started from the premise that we need more open innovation approaches to effectively address societal challenges. The project was designed to help deepen knowledge and capacity to act and grow social innovation, and to support public and other decision-makers across Europe to work with social innovators more effectively in solving public challenges.

SIC was funded under the European Commission Horizon 2020 funding over a three year period, from 2016 to 2019. During these three years, SIC ran a series of on and offline activities - including practical place-based experimentation, learning, policy and research.

The SIC project was run by a consortium of 12 leading organisations across Europe. The partners are AEIDL, TU Dortmund University, University of Bologna, The Young Foundation, Nesta, Social Innovation Lab, The Dutch

Research Institute for Transitions, Sinergiak UPV/EHU, ZSI, The Danish Technological Institute, REVES and Social Innovation Exchange.

Within these pages you can find details about some of the SIC activity, and the project's impact on the social innovation ecosystem in Europe.

SIC TODAY

Although the project officially ended in January 2019, the social innovation community in Europe is still thriving, and many of the activities that were created under the SIC brand still continue today. At the end of this booklet, you will find ways to continue to work with the SIC consortium partners, to continue to nurture and grow social innovation in Europe.



ALMA MATER STUDIORUM
UNIVERSITÀ DI BOLOGNA



THE
YOUNG
FOUNDATION



Universidad del País Vasco
Euskal Herriko Unibertsitatea



DANISH
TECHNOLOGICAL
INSTITUTE



tu technische universität
dortmund



[HIGHLIGHTS FROM] A DECADE OF BUILDING INNOVATION COMMUNITIES IN EUROPE

Here are some of the highlights of how the European Commission has supported a social innovation community to thrive in Europe. In between these examples, there has been lots of funding towards understanding and testing social innovation approaches.

2009

Reinventing Europe through Innovation report launched by a high level business panel on innovation. It recognises that social must be part of future innovation policy.

2010

European Commission's BEPA launch **Empowering people, driving change** - the first strategy to grow social innovation in the European Union.



2011

President Barroso launches **Social Innovation Europe (SIE)**, the first online database and map of 'who's doing what and where' and report on how to measure and finance social innovation.



2016

Social Innovation Community launched, funded under Horizon 2020. This network of networks builds on the base established by SIE.



SOCIAL INNOVATION COMMUNITY

2017

Opening up to an ERA of Social Innovation Conference in Lisbon, Portugal. Convened by the European Commission and Portuguese government, President Juncker event set a new direction for the future of social innovation.



2018

SIC launches the co-created **Lisbon Declaration**, setting out 10 policy ideas for how to support social innovation. Welcomed by Commissioner for Research, Science and Innovation, Carlos Moedas.



“

Social innovation gained ground in European policies when liberal thinking was widespread. It was seen as a way to compensate for shrinking social budgets, while addressing new challenges (ageing, migration, poverty, climate change and rapid technological change).

Ten years later, the same challenges persist but are more political as the need to reinvent the strength of democracy resonates in protests across Europe. Reinventing democracy is, on a daily basis, what is being done by Justyna and Urban Workshop in Poland; by Fiorella in Milan; by ZEMOS98 who are supporting the fight for social transformation in Seville; by commons cities and assemblies; and by all of the changemakers who were brought together by the Social Innovation Community project, and finally in Seville last November.

SIC has made social innovation more political, increasing public attention and resources towards the field. The project has shown how the European social innovation community is ready to address new challenges.

**AGNÈS HUBERT
PRESIDENT OF GENDER FIVE PLUS
THE FIRST EUROPEAN FEMINIST THINK TANK**

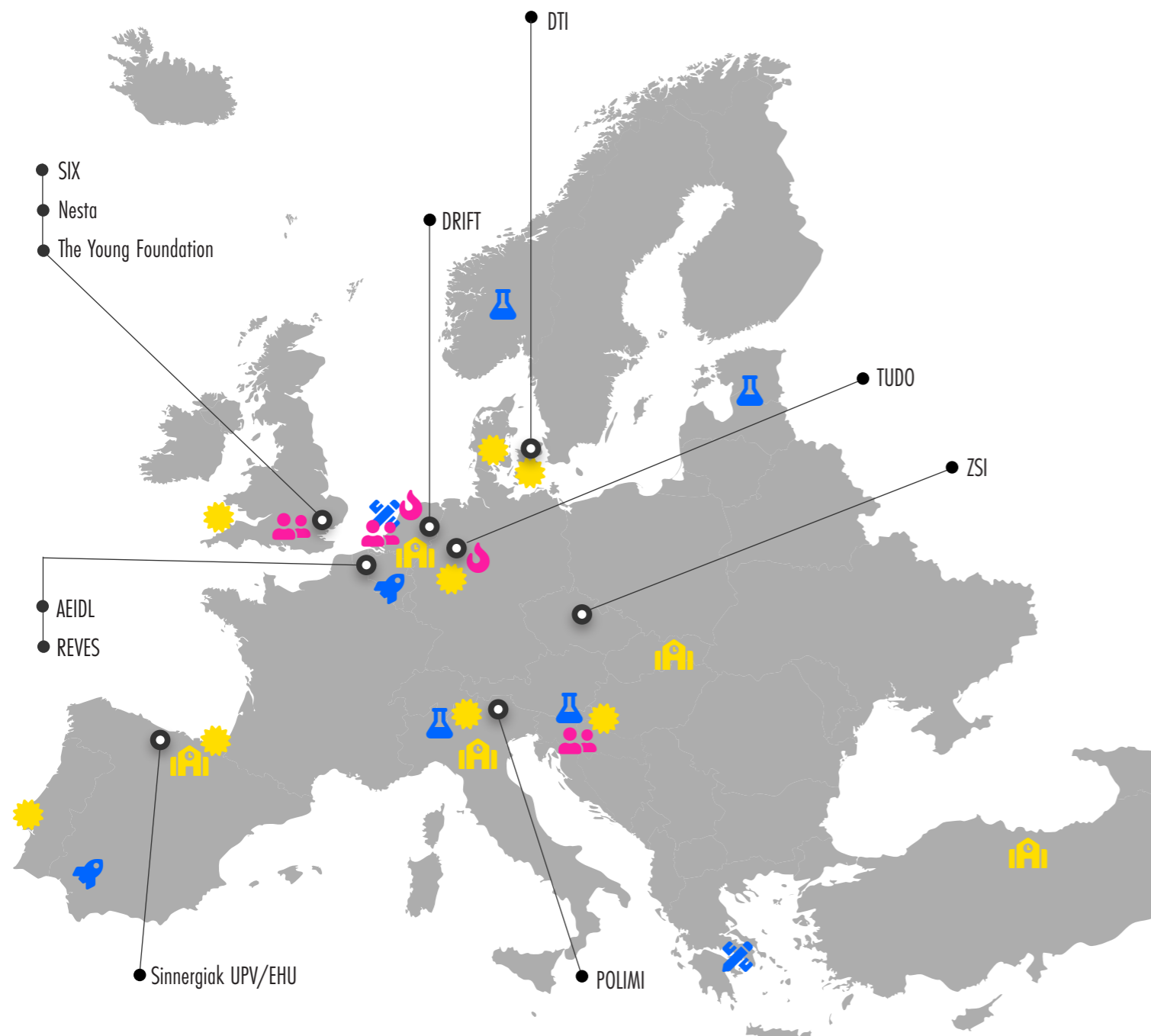









Framing Social Innovation at the heart of the process of reform of the welfare systems proved to have high potential to develop concrete solutions and new funding mechanisms to support growth while strengthening the governance and resilience of our economic systems, and to collectively respond to the challenges posed by the profound transformations that affect our societies.

**GIANLUCA MISURACA
SENIOR SCIENTIST
EUROPEAN COMMISSION,
JOINT RESEARCH CENTRE**

”

SIC IN EUROPE 2016 - 2019

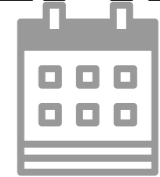


-  **SUMMER SCHOOLS** - CHALLENGE BASED CO-DESIGN WORKSHOPS FOCUSING ON CITY CHALLENGES
-  **EXPERIMENTATION CENTRES** - HIGH IMPACT CITY-BASED EXPERIMENTS WITH OPEN INNOVATION PRINCIPLES
-  **HOT TOPIC WORKSHOPS** - ONE DAY WORKSHOP ON CURRENT IMPORTANT TOPICS FOR RESEARCH
-  **#SIDECLARATION WORKSHOPS WITH CITIES**
-  **POLICY MASTERCLASS** - ONE DAY WORKSHOP CREATING AWARENESS OF THE VALUE OF SOCIAL INNOVATION POLICY APPROACHES
-  **FINAL EVENT/LAUNCH EVENT** - BIG GATHERINGS TO SET DIRECTION OF SOCIAL INNOVATION ACROSS EUROPE
-  **RELAY** - ON-OFFLINE PEER-LEARNING AND KNOWLEDGE EXCHANGE
-  **SIC PARTNERS**

12 PARTNERS



3 YEARS



70

EVENTS AND ROADSHOWS, BOTH ONLINE AND OFFLINE, WERE ORGANISED OR CONTRIBUTED TO IN

15000+

ONLINE ENGAGEMENT (FACEBOOK, TWITTER, NEWSLETTER)



36

CITIES AND

21

COUNTRIES IN EUROPE



1000+

IN-PERSON PARTICIPATION



11 NETWORKS

A NETWORK OF NETWORKS

USING NETWORKS TO BUILD A COMMUNITY

Louise Pulford, SIX

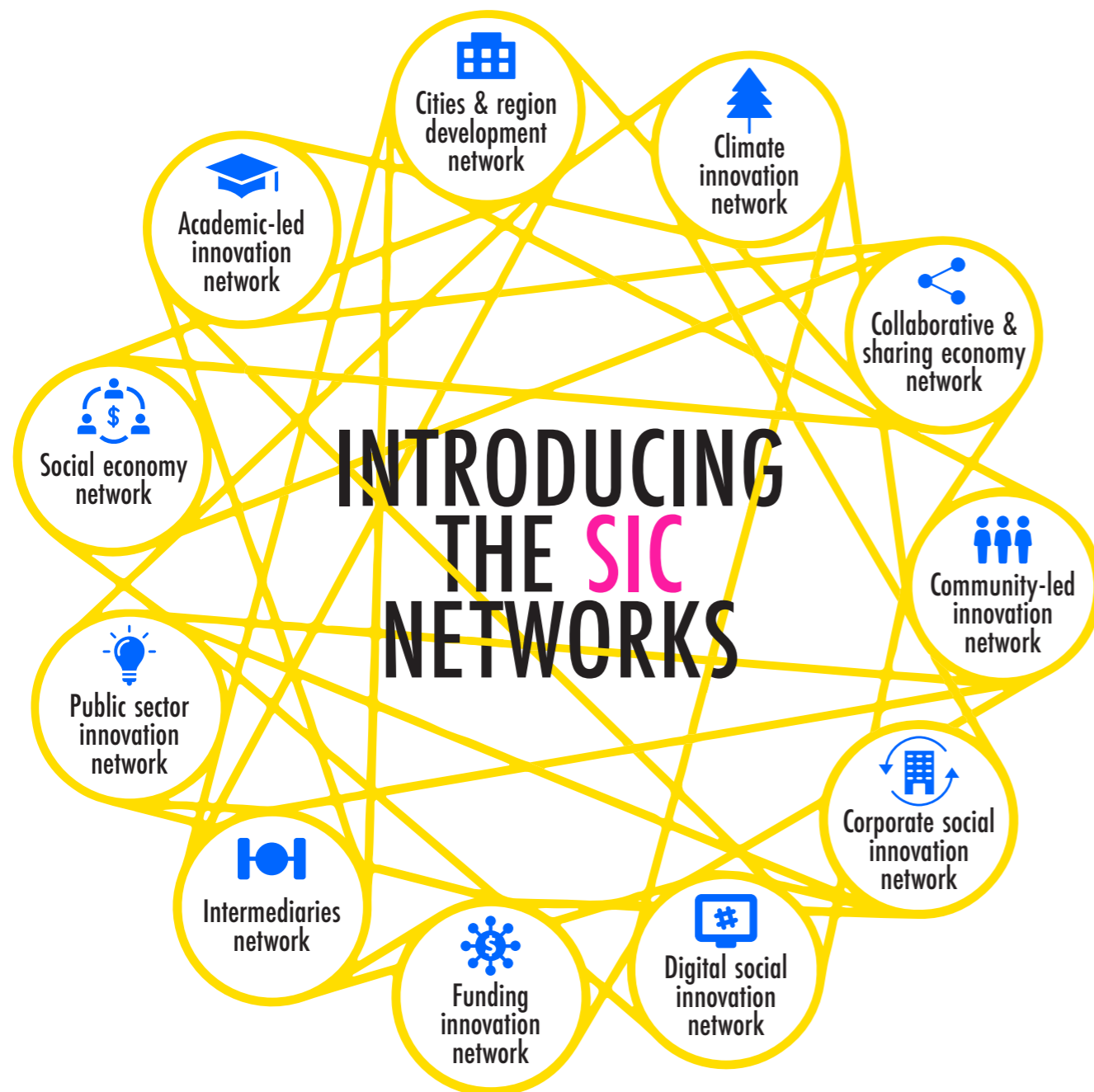
A network approach is at the very heart of the Social Innovation Community (SIC). Networks have been at the core of both our internal operation as a project, and our external engagement with social innovation actors across Europe.

What we mean by a network approach

It is widely accepted that no one sector or organisation can tackle the wicked societal challenges we face. We need to work together, across geographical and sectoral boundaries. We need a coordinated approach.

We need to speed up the process of learning and exchange. This is perhaps why it has become so fashionable to be a network at the moment. There are lots of different kinds of networks, and therefore lots of different strategies to manage networks.

If managed properly, this approach capitalises on the three main things that networks can provide for social innovation; building capacity of network partners; speeding up the process of learning; and increasing the social impact of the initiatives undertaken.



One of the biggest challenges for the field of social innovation globally is that it is fragmented. In Europe, while the European Commission has supported a number of research, coordination and support projects with valuable outcomes, these are still largely disconnected. This could mean that the field of social innovation, although dynamic and changing rapidly as new trends emerge and new groups of actors become interested, is still not living up to its full potential and achieving the societal impact needed.

This is why the overarching aim of the Social Innovation Community was to create a 'network of networks' of social innovation actors. Over three years, SIC identified, engaged and connected actors including researchers, social innovators, citizens, policy-makers, as well as intermediaries, businesses, civil society organisations and public sector employees.

We organised these actors around a set of networks, and a set of cross cutting areas of action (our work packages) - Research, Policy, Experimentation and Learning. The project was designed so that the networks would work with each other, and with these action areas. The networks were also an outreach tool for the project to spread social innovation and bring new actors, fresh ideas, and different perspectives to the project. The SIC networks were a way for us to tap into the pockets of dynamic social innovation activity across Europe, which often act in silos.

The network approach of SIC - with an emphasis on engagement rather than membership - has also underpinned the project's external engagement with social innovation actors across Europe. The network mindset of SIC has helped the project connect into existing activity in the region, and to engage partners new to the project, or to the concept of social innovation. The project's focus on building trust and connections between people aligned around a common purpose, has led to a great many exchanges across countries, sectors and organisations throughout the three years. These valuable exchanges have created a network of networks, which have profoundly expanded both the reach and the impact of the SIC project.

The network approach as a way of operating (within the consortium)

The network approach of SIC is not restricted to those managing networks. Rather it has become a way of operating, an approach, and a communication principle which all SIC partners have taken on.

The challenge faced by many European Commission funded projects is that the division of the project into well-defined work packages creates silos that do not



communicate or collaborate easily with one another. Usually, these projects don't include a formal mode of exchanging, connecting and learning as the members of the network focus on their own work packages. The Social Innovation Community is different. We have embedded a network approach.

This approach values engagement between the network partners, and provides them with the opportunity to form deep and trusting relationships with one another. The SIC consortium values regular, honest, non-hierarchical and fun communication!

Through this approach, consortium partners in SIC have been able to build relationships throughout the network, not just with those with whom they directly work. A group of organisations and individuals that are trusting and supportive become sources of advice and inspiration for one another. This approach also ensures that learning and insights gained during the project are properly exploited, as they are shared and engaged with by all partners.

By embedding a network approach throughout the project - both internally and externally, the Social Innovation Community project has truly built a thriving community - one that is engaged, supportive and continuing to grow.

FOUR ACTIVITIES - NETWORKS IN PRACTICE



RESEARCH



EXPERIMENTATION



LEARNING



POLICY

Through our cross-cutting work packages, we delivered engagement, research, experimentation, learning and policy activities that engage with and support each of the networks. These activities are complementary and build on each other's work, rather than operating in silos.

Our research work aimed to build on what existed already, not to create new knowledge. SIC aimed to create a framework for a common understanding of social innovation, by examining past trends, the latest evidence and emerging methodologies in order to identify priority areas through our future roadmap.

We set out to test new approaches to social innovation by running grassroots and institutional experiments, in locally defined priority areas.

Learning from our research and experiments, we promoted social innovation learning among practitioners, policymakers and researchers by using participatory learning processes, enabling reflection on practice, and developing and sharing models, tools and other resources of best practice through our Learning Repository.

At the same time, we supported policymakers at the European and other levels to design policy and other measures to support social innovation, by making evidence-based recommendations and linking policymakers to practitioners, citizens and the latest research.

SIC KEY COMPONENTS & OUTPUTS

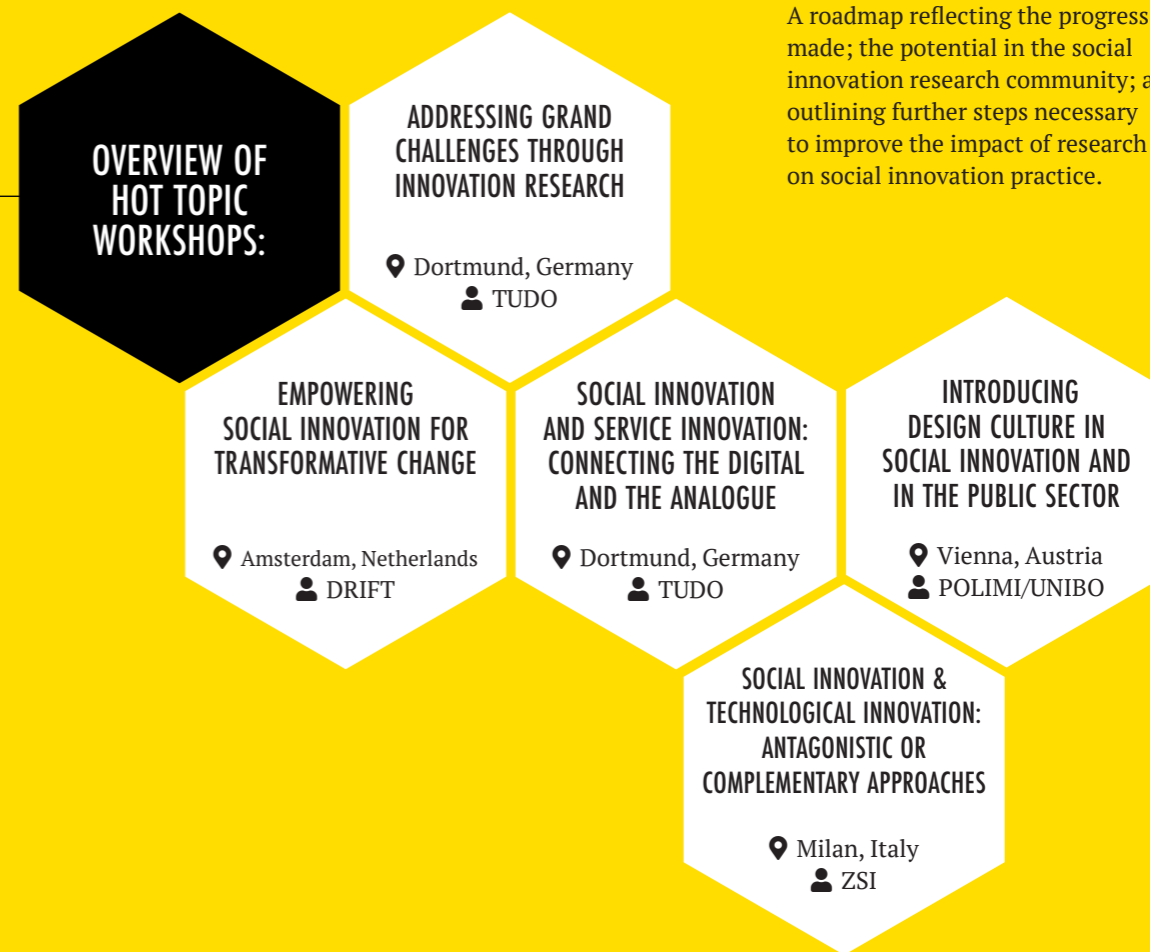


RESEARCH IN ACTION

We supported the emergence of an inclusive social innovation research community which transcends European borders by comparing different social innovation traditions and their involvement in different thematic areas, and identifying synergies. Building on existing networks, we have further advanced the field of social innovation as a whole in theory and practice. We identified, highlighted and encouraged discussion on the most pertinent topics, empirical results and methodologies in social innovation research.

RESEARCH ROADMAP

A roadmap reflecting the progress made; the potential in the social innovation research community; and outlining further steps necessary to improve the impact of research on social innovation practice.



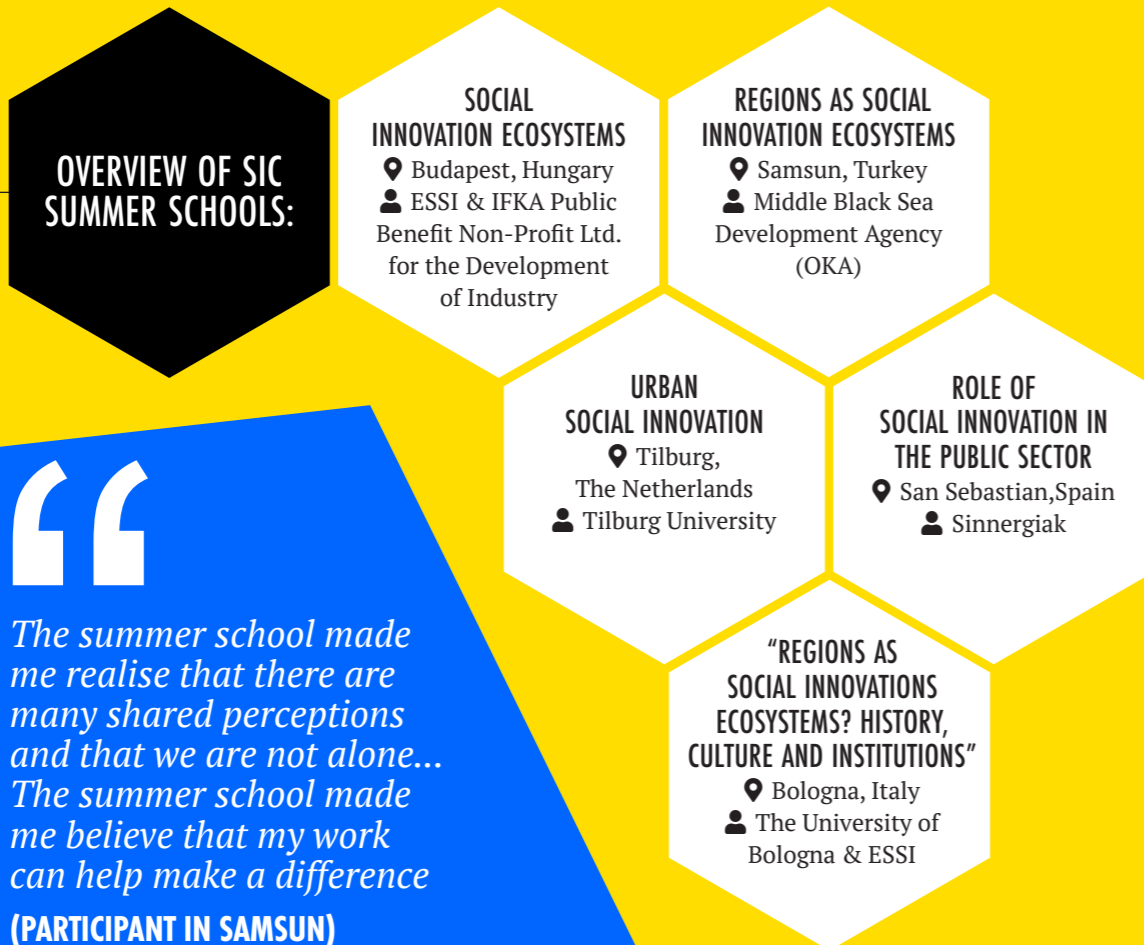


PARTICIPATORY LEARNING

- We promoted learning and reflective practice as part of a new social innovation culture, which links open and participatory learning processes to solving social problems and scaling-up local solutions and competencies within and across SIC networks. Social innovation actors have different learning needs depending on their roles, objectives and the contexts in which they operate. Realising the full potential of social innovation requires a systematic approach to developing a social innovation learning framework. We have connected dispersed practices, experiences and actors across Europe and co-created and shared a common understanding of learning as fundamental for the diffusion of a new social innovation culture.

- SUMMER SCHOOLS**

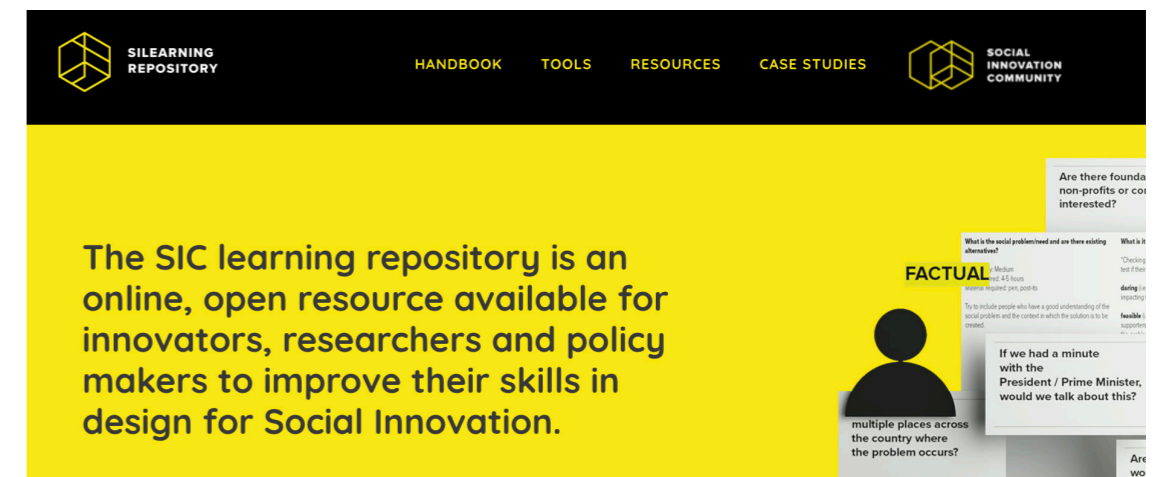
One of the key outputs is the SIC Summer School (SUMSIC), a two-day deep dive event where researchers, social innovators, citizens and policymakers from different networks meet, co-produce and share knowledge by reflecting on current hot topics in the field. Want to know more? Watch the video at [SIC Summer School](#) or scan the QR code.



The summer school made me realise that there are many shared perceptions and that we are not alone... The summer school made me believe that my work can help make a difference
(PARTICIPANT IN SAMSUN)



- LEARNING REPOSITORY (www.silearning.eu)**



- LEARNING RELAYS**

An experimental set up which combines a face-to-face thematic workshop with an online learning relay where participants tap into each other's knowledge and networks to crowdsource input for each other's challenges.





EXPERIMENTATION

- We have conducted high impact experiments and tested new models of cross-sector and transnational collaborations to address locally defined issues and challenges. We have created a platform for sharing inspiring potential solutions, with a strong potential for replication, adoption or scaling up across Europe and beyond, and which have either been proven in other areas or sectors, or which are locally designed through this process.



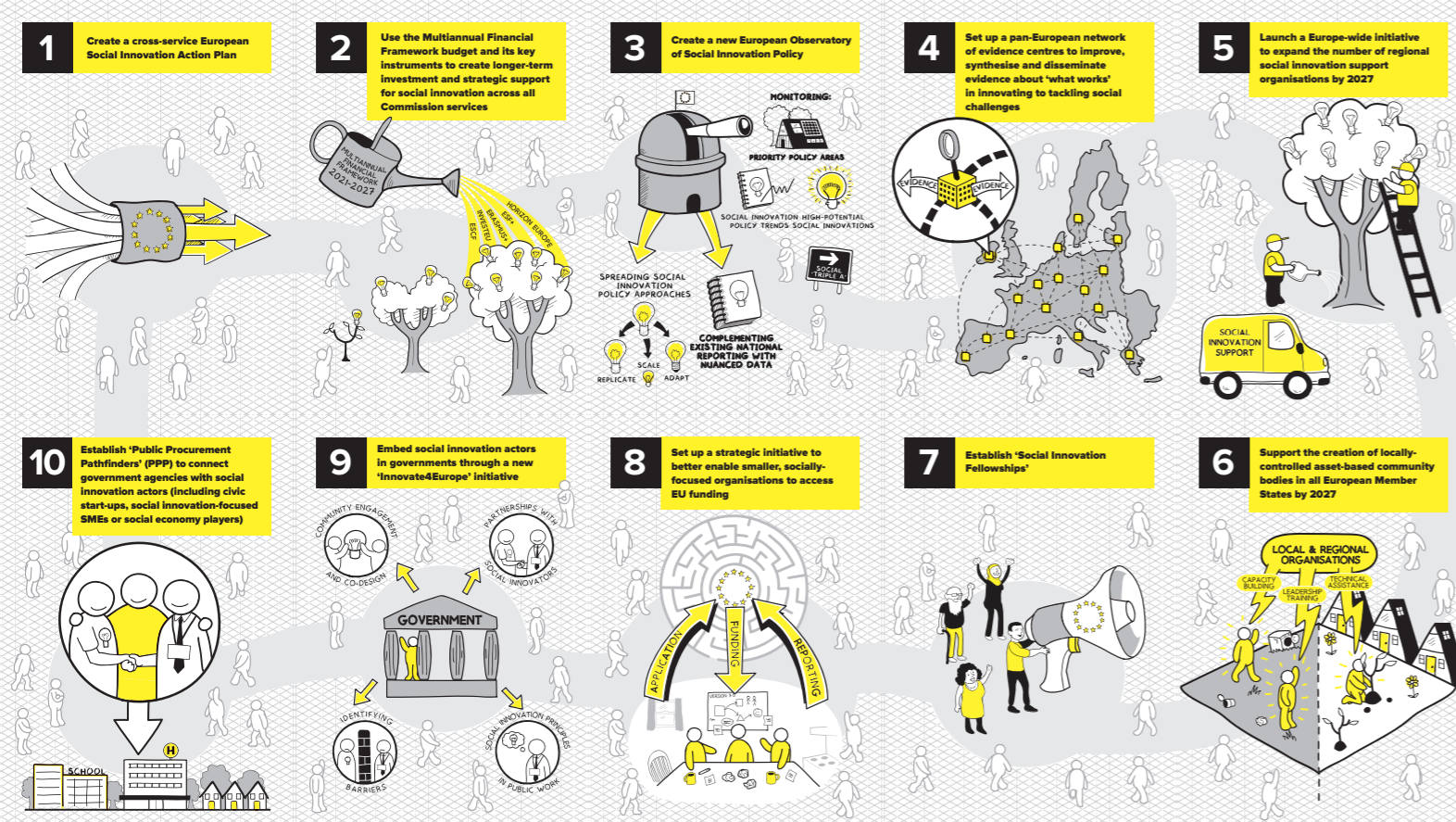
EXPERIMENTATION CENTRES

We conducted 5 experiments in 4 cities in Italy, Norway, Estonia and Croatia. We worked closely with a host centre to co-design challenges and co-create solutions.

There are two major themes on the experimentation in these cities and the partners are:



- **EXPERIMENTATION PROCESS**
An illustration was produced to explain the methodology and process of experimentation.



POLICY MASTERCLASSES

A series of practical policy learning workshops aimed at accelerating the policy impact of SIC's networks, by drawing on the social innovation learning principles of learning-by-doing and collaborative learning



INFLUENCING POLICY

We have increased understanding about how social innovation can contribute to meeting the policy objectives of the European Union and its Member States, and increased the relevance and effectiveness of public policy related to social innovation.

#SIDeCLARATION

Over 350 representatives of the community from over 19 EU countries have played a role in co-producing the vision and 10 policy ideas it sets out. The Lisbon Declaration of Social Innovation truly belongs to the community. As of Jan 2019, we have more than 600 people from across Europe endorsing the #SIDeclaration. Most importantly, Carlos Moedas, Commissioner for Research, Science and Innovation publicly signalled support for Europe's first cross-sector, citizen-led Declaration for Social Innovation.



Beyond
Imagination:
a socially
innovative
Europe

SOCIAL
INNOVATION
COMMUNITY

WHAT THE PARTNERS THINK OF SIC

Social innovation is all about people. Partners from across Europe have been working together for three years to make the Social Innovation Community (SIC) thrive. Learning between partners has been important, let's hear from them what they think about SIC!

“

...seeing the #SIDeclaration take shape from a tangle of ideas all over the place, and seeing the uptake and success of our tools, events and content, I am quite impressed with ourselves...

**URSULA
FROM ZSI**

..SIC has navigated its way through the foggy field of social innovation and found a unique balance for the theory and practice, finding practical solutions for the present and the future...

**ALEKSANDRA
FROM AEIDL**

”

“

... SIC project was a genuine journey of “learning by being inspired”. An inspiration that came from different sides and a common understanding of the potential of social innovation to drive positive social change in our society...

MONICA FROM THE YOUNG FOUNDATION

“

... the process of social innovation requires that we work flexibly, collaboratively, and respond to opportunities as they arise. The #SIDeclaration, which was not foreseen at the outset of the project, has ended up being one of the project's most impactful policy outputs. This is thanks to a coordinated effort on the part of all partners who generously shared their contacts, engaged their networks and thanks to the many useful relationship we have built up over the past 3 years...

NESTA

“

...SIC is itself a project of unusual suspects, different perspectives and diverse approaches. I think this qualified us well to run such a project. We have demonstrated how truly working collaboratively can create long lasting relationships, and deep impact (even if it is sometimes hard communicating with people from different sectors and backgrounds). We are becoming a group of organisations who are innovative in approach and process, not just in talk and outcomes....

**LOUISE
FROM SIX**

“

...A wonderful experience during these three years has been the openness to discuss and create content – together with a diversity of people and organisations...

REVES

...The SIC project is an extraordinary example of a collaborative activity started 3 years ago among partners that really did not know each other and, thanks to the aspiration to make things and to have a continuous dialogue, produced one of the most successful projects...

**FRANCESCA
FROM POLIMI**

”

WHAT'S NEXT?

Although the SIC project officially ends in January 2019, we don't want SIC to disappear, like many other EU funded projects! We believe in collective effort. So, we will continue some of our activities. Here is how you can stay connected and collaborate with us:

ACCESS SIC TOOLS AND CASE STUDIES VIA THE LEARNING REPOSITORY

On the SIC Learning Repository, you can continue to find blogs and resources related to the public sector and the use of social innovation to improve the welfare system. You can find lots of the content that was on the main SIC website that supports the public sector to take advantage of social innovation in the everyday practices of service delivery. You can also access all of the tools produced and collected during the SIC project that support the design and experimentation of social innovations by innovators, intermediaries and the public and private sectors. The website can be found here: www.silearning.eu.

MEET US AT EVENTS

We will collaborate with the European School of Social Innovation (ESSI) to continue the legacy of SIC. ESSI will invite the SIC community to attend the ESSI international conferences every two years, which are related to the current "hot topics" of social innovation. The upcoming one will be in October 2019 on 'Social Innovation and Socio-Digital Transformation', in Dortmund, Germany. For updates, check out the ESSI website: www.essi-net.eu



WE BELIEVE IN COLLECTIVE EFFORT.

BECOME A SIC CO-HOST TACKLING PRACTICAL CHALLENGES IN YOUR CITY

We are looking for partners who want to support and collaborate with us to continue to run SIC activities. For example, if you want to co-host a three-day, co-design workshop focussing on a challenge in your city, get in touch and we can host a **Summer School** together!

Are you interested in the process of experimentation to develop a safe space for innovation? Reach out to us and we can explore **experimentation** together in your city!

If you are developing your own social innovation strategy in your city or country, get in touch to see how you can use the **#SIDeclaration** to shape your social innovation policy.

If you want to develop **any of the SIC activities** in your city or region, please get in touch. We are more than happy to facilitate these, and to help build a stronger social innovation community across Europe together.

STAY CONNECTED TO WHAT'S GOING ON WITH SOCIAL INNOVATION IN EUROPE

Too soon to say goodbye? Don't worry! We will still send you an exciting quarterly newsletter to keep you updated!

CONTACT US



www.siceurope.eu



SPRING 2019

EDITED BY: MARCO SHEK AND SOPHIE MONAGHAN-COOMBS AT SIX
DESIGNED BY: LIZ AT ELIZABETHELCOATE.COM

